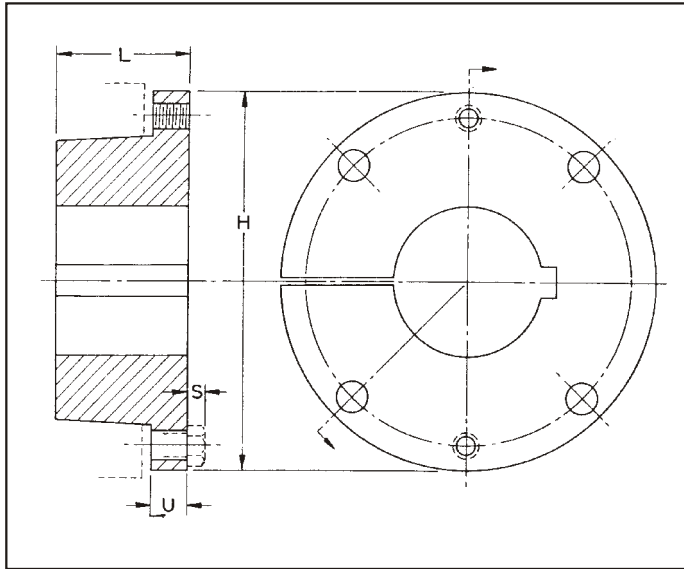


XT Bushings



XT BUSHING SPECIFICATIONS

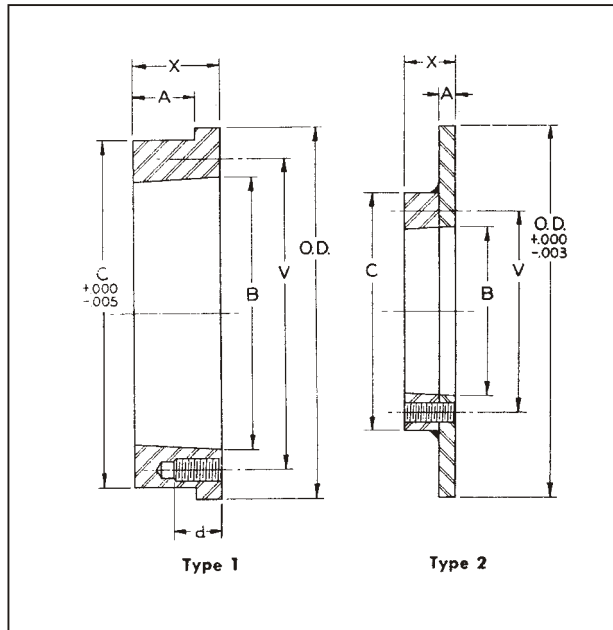
Bushing Part No.	Dimensions				Cap Screws		Wt lbs
	L	U	H	S	No	Size	
XTB15	1 1/8"	3/8"	2 7/8"	5/32"	4	1/4" X 1"	.7
XTB20	1 13/32	15/32	3 3/4	7/32	4	5/16" X 1 1/4	1.5
XTB25	1 7/8	5/8	4 7/16	1/4	4	3/8" X 1 3/4	2.6
XTB30	2 1/16	1 1/16	5 5/16	9/32	4	7/16" X 1 1/2	4.2
XTB35	2 15/32	25/32	6 5/16	5/16	4	1/2" X 1 3/4	7.4
XTB40	2 13/16	7/8	7 1/8	3/8	4	9/16" X 2	10.5
XTB45	3 5/16	15/16	8	13/32	4	5/8" X 2 1/4	14.8
XTB50	3 3/4	1	10 1/8	15/32	4	3/4" X 2 1/2	27.8
XTB60	4 1/8	1 1/8	11 15/16	9/16	4	7/8" X 2 1/2	42.8
XTB70	4 11/16	15/16	13 15/16	5/8	4	1" X 3	66.3
XTB80	5 1/8	1 3/8	15 5/8	1 1/16	4	1 1/8" X 3 1/2	85.7
XTB100	6 3/16	1 9/16	17 15/16	1 1/16	6	1 1/8" X 3 1/2	146.0
XTB120	7 1/16	1 3/4	20 5/8	1 1/16	8	1 1/8" X 3 1/2	216.0

STOCK XT BUSHINGS

Bushing Part No.	Stock Bores	Keyseat	Key Supplied
XTB15	5/8" *, 3/4" *, 7/8" * 1", 1 1/8", 1 3/16", 1 1/4", 1 7/16", 1 1/2", 1 15/16", 1 1/2"	3/16" X 3/32" 1/4 X 1/8 3/8 X 1/8	none none 3/8" x 5/16" x 1 1/8"
XTB20	3/4 1, 1 3/16, 1 1/4, 1 7/16, 1 1/2, 1 15/16", 2", 2 3/16", 2 7/16"	3/16" X 3/32 1/4 X 1/8 3/8 X 3/16 1/2 X 3/16	none none none 1/2" x 7/16" x 1 3/8"
XTB25	1, 1 3/16, 1 1/4, 1 7/16, 1 1/2, 1 11/16, 1 3/4, 1 15/16, 2, 2 3/16, 2 7/16"	1/4 X 1/8 3/8 X 3/16 1/2 X 1/4 5/8 X 1/4	none none none 5/8" x 7/16" x 1 3/4"
XTB30	1 7/16, 1 1/2, 1 11/16, 1 15/16, 2 3/16, 2 7/16, 2 11/16", 2 15/16"	3/8 X 3/16 1/2 X 1/4 5/8 X 5/16 3/4 X 3/16	none none none 3/4 x 9/16 x 2
XTB35	1 15/16, 2 3/16, 2 7/16", 2 11/16", 2 15/16", 3 7/16"	1/2 x 1/4 5/8 x 5/16 3/4 x 3/8 7/8 x 5/16	none none none 7/8 x 3/4 x 2 1/2
XTB40	2 7/16, 2 15/16, 3 7/16", 3 15/16"	5/8 x 5/16 3/4 x 3/8 7/8 x 7/16 1 x 3/8	none none none 1 x 7/8 x 2 3/4
XTB45	3 7/16, 3 15/16", 4 7/16"	7/8 x 7/16 1 x 1/2 1 x 3/8	none none 1 x 7/8 x 3 1/4
XTB50	3 15/16, 4 7/16, 4 15/16	1 x 1/2 1 1/4 x 5/8	none none
XTB60	5 7/16, 5 1/2, 5 15/16, 6	1 1/4 x 5/8 1 1/2 x 3/4	none none
XTB70	6 7/16, 6 1/2, 6 15/16, 7	1 1/2 x 3/4 1 3/4 x 3/4	none none
XTB80	7 1/2, 7 15/16, 8	1 3/4 x 3/4 2 x 3/4	none none
XTB100	8 1/2, 9, 9 7/16, 9 1/2, 10	2 x 3/4 2 1/2 x 7/8	none none
XTB120	10 1/2, 11, 11 1/2, 12	2 1/2 x 7/8 3 x 1	none none

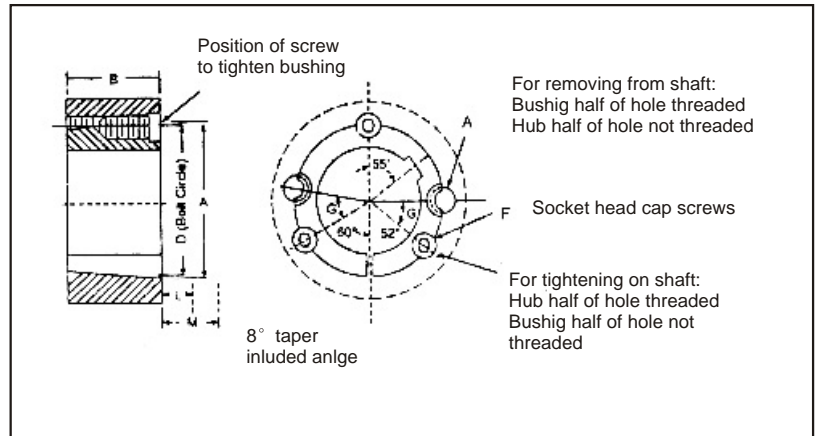
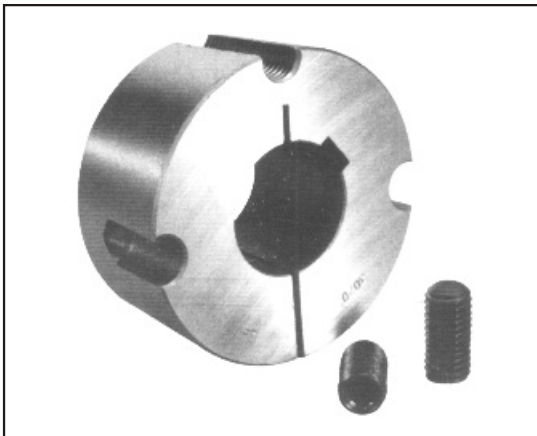
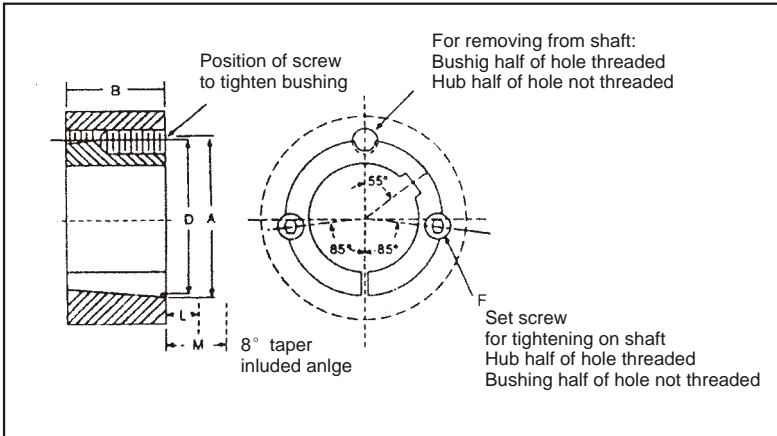
*These bushings are malleable iron; all others are cast iron.

XT Hubs



Part No.	For Bushing	Dimensions							Tapped Holes		Wt lbs.
		O.D.	A	B	C	V	X	d	No.	Size	
TYPE 1 Hubs											
XTH15	XTB15	3 ¹ / ₄ "	7 ¹ / ₁₆ "	2.000 "	2 ⁷ / ₈ "	2 ⁷ / ₁₆ "	5 ⁵ / ₈ "	5 ⁵ / ₈ "	4	1 ¹ / ₄ " - 20UNC	3
XTH20	XTB20	4 ¹ / ₈	9 ¹ / ₁₆	2.688	3 ¹³ / ₁₆	3 ³ / ₁₆	1 ³ / ₁₆	1 ³ / ₁₆	4	5 ¹ / ₁₆ - 18UNC	1.5
XTH25	XTB25	4 ³ / ₄	1 ³ / ₁₆	3.188	4 ³ / ₈	3 ³ / ₄	1 ¹ / ₈	1 ¹ / ₈	4	3 ³ / ₈ - 16SNC	2.5
XTH30	XTB30	6	7 ⁸ / ₈	3.875	5 ³ / ₄	4 ⁹ / ₁₆	1 ¹ / ₄	1 ¹ / ₁₆	4	7 ¹ / ₁₆ - 14UNC	4.3
XTH35	XTB35	6 ⁵ / ₈	1 ¹ / ₁₆	4.688	6.345	5 ⁷ / ₁₆	1 ¹ / ₂	1 ¹ / ₄	4	1 ¹ / ₂ - 13UNC	6.5
XTH40	XTB40	7 ⁵ / ₈	1 ¹ / ₄	5.313	7 ¹ / ₄	6 ¹ / ₈	1 ³ / ₄	1 ³ / ₈	4	9 ¹ / ₁₆ - 12UNC	19.2
XTH45	XTB45	8 ³ / ₈	1 ¹ / ₂	5.938	8	6 ⁷ / ₈	2 ¹ / ₈	1 ⁹ / ₁₆	4	5 ⁵ / ₈ - 11UNC	19.4
XTH50	XTB50	10	1 ³ / ₄	7.250	9 ⁹ / ₁₆	8 ⁵ / ₁₆	2 ¹ / ₂	1 ³ / ₄	4	3 ³ / ₄ - 10UNC	24.5
XTH60	XTB60	11 ³ / ₄	1 ¹⁵ / ₁₆	8.625	11 ¹ / ₄	9 ⁷ / ₈	2 ³ / ₄	1 ⁵ / ₈	4	7 ⁷ / ₈ - 9UNC	24.5
XTH70	XTB70	13 ¹¹ / ₁₆	2 ³ / ₁₆	10.000	13 ³ / ₁₆	11 ⁹ / ₁₆	3 ¹ / ₈	1 ¹⁵ / ₁₆	4	1 - 8UNC	57.7
XTH80	XTB80	15	2 ⁷ / ₁₆	11.125	14 ⁵ / ₈	12 ⁷ / ₈	3 ⁷ / ₁₆	2 ³ / ₈	4	1 ¹ / ₈ - 7UNC	75.6
XTH100	XTB100	18	3	13.688	17 ¹ / ₂	15 ⁹ / ₁₆	4 ¹ / ₈	2 ³ / ₁₆	6	1 ¹ / ₈ - 7UNC	122
XTH120	XTB120	21	3 ¹ / ₂	16.188	20 ¹ / ₂	18 ³ / ₁₆	4 ¹³ / ₁₆	2	8	1 ¹ / ₈ - 7UNC	188
TYPE 2 Hubs											
XTH15F4	XTB15	3.855 "	1 ¹ / ₄ "	2.000 "	3 ⁵ / ₈ "	2 ⁷ / ₁₆ "	9 ⁹ / ₁₆ "	-	4	1 ¹ / ₄ " - 20UNC	1.2
XTH15F5	XTB15	4.805	1 ¹ / ₄	2.000	4 ⁵ / ₈	2 ⁷ / ₁₆	9 ⁹ / ₁₆	-	4	1 ¹ / ₄ - 20UNC	1.7
XTH15F6	XTB15	5.815	1 ¹ / ₄	2.000	5 ¹ / ₂	2 ⁷ / ₁₆	9 ⁹ / ₁₆	-	4	1 ¹ / ₄ - 20UNC	2.3
XTH15F8	XTB15	7.807	1 ¹ / ₄	2.000	2 ⁷ / ₈	2 ⁷ / ₁₆	1 ¹¹ / ₁₆	-	4	1 ¹ / ₄ - 20UNC	3.8
XTH20F5	XTB20	4.805	1 ¹ / ₄	2.688	3 ³ / ₄	3 ³ / ₁₆	1 ¹³ / ₁₆	-	4	5 ¹ / ₁₆ - 18UNC	1.8
XTH20F6	XTB20	5.815	1 ¹ / ₄	2.688	3 ³ / ₄	3 ³ / ₁₆	1 ¹³ / ₁₆	-	4	5 ¹ / ₁₆ - 18UNC	2.4
XTH20F8	XTB20	7.807	1 ¹ / ₄	2.688	3 ³ / ₄	3 ³ / ₁₆	1 ¹³ / ₁₆	-	4	5 ¹ / ₁₆ - 18UNC	3.9
XTH20F10	XTB20	9.827	5 ¹ / ₁₆	2.688	3 ³ / ₄	3 ³ / ₁₆	1 ¹³ / ₁₆	-	4	5 ¹ / ₁₆ - 18UNC	7.0
XTH20F12	XTB20	11.847	5 ¹ / ₁₆	2.688	3 ³ / ₄	3 ³ / ₁₆	-	-	4	5 ¹ / ₁₆ - 18UNC	9.7
XTH25F6	XTB25	5.815	5 ¹ / ₁₆	3.188	4 ³ / ₈	3 ³ / ₄	1 ¹ / ₈	-	4	3 ³ / ₈ - 16UNC	3.4
XTH25F8	XTB25	7.807	5 ¹ / ₁₆	3.188	4 ³ / ₈	3 ³ / ₄	1 ¹ / ₈	-	4	3 ³ / ₈ - 16UNC	5.3
XTH25F10	XTB25	9.827	5 ¹ / ₁₆	3.188	4 ³ / ₈	3 ³ / ₄	1 ¹ / ₈	-	4	3 ³ / ₈ - 16UNC	7.8
XTH25F12	XTB25	11.847	5 ¹ / ₁₆	3.188	4 ³ / ₈	3 ³ / ₄	1 ¹ / ₈	-	4	3 ³ / ₈ - 16UNC	10.6

Taper Bushings

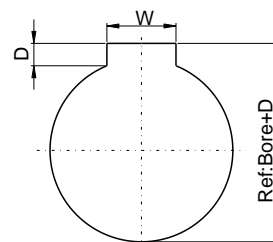


Dimensions for 3535 thru 5050 TAPER Bushings

Bush.No.	A	B	D	Socket Head Cap Screws	G
3535	5	3 1/2	4.83	1/2x1 1/2	40
4040	5 3/4	4	5.54	5/8x1 3/4	40
4545	6 3/8	4 1/2	6.13	3/4x2	40
5050	7	5	6.72	7/8x2 1/4	37

Dimensions for 1008 thru 3030 TAPER Bushings

Bush.No.	A	B	D	Set Screws
1008	1.386	7/8	121/64	1/4x 1/2
1108	1.511	7/8	129/64	1/4x 1/2
1210	17/8	1	13/4	3/8x 5/8
1215	17/8	1 1/2	13/4	3/8x 5/8
1310	2	1	17/8	3/8 x5/8
1610	2 1/4	1	2 1/8	3/8x 5/8
1615	2 1/4	1 1/2	2 1/8	3/8x 5/8
2012	2 3/4	1 1/4	2 5/8	7/16 x7/8
2017	2 3/4	1 3/4	2 5/8	7/16 x7/8
2517	3 3/8	1 3/4	3 1/4	1/2x 1
2525	3 3/8	2 1/2	3 1/4	1/2x 1
3020	4 1/4	2	4	5/8x 1 1/4
3030	4 1/4	3	4	5/8x 1 1/4



ISO STANDARD METHOD
FOR MEASURING KEYSEAT DEPTH
D: depth measured at centering

MM Bore Key way dimensions conform to ISO standard

Taper Bushing Keyway

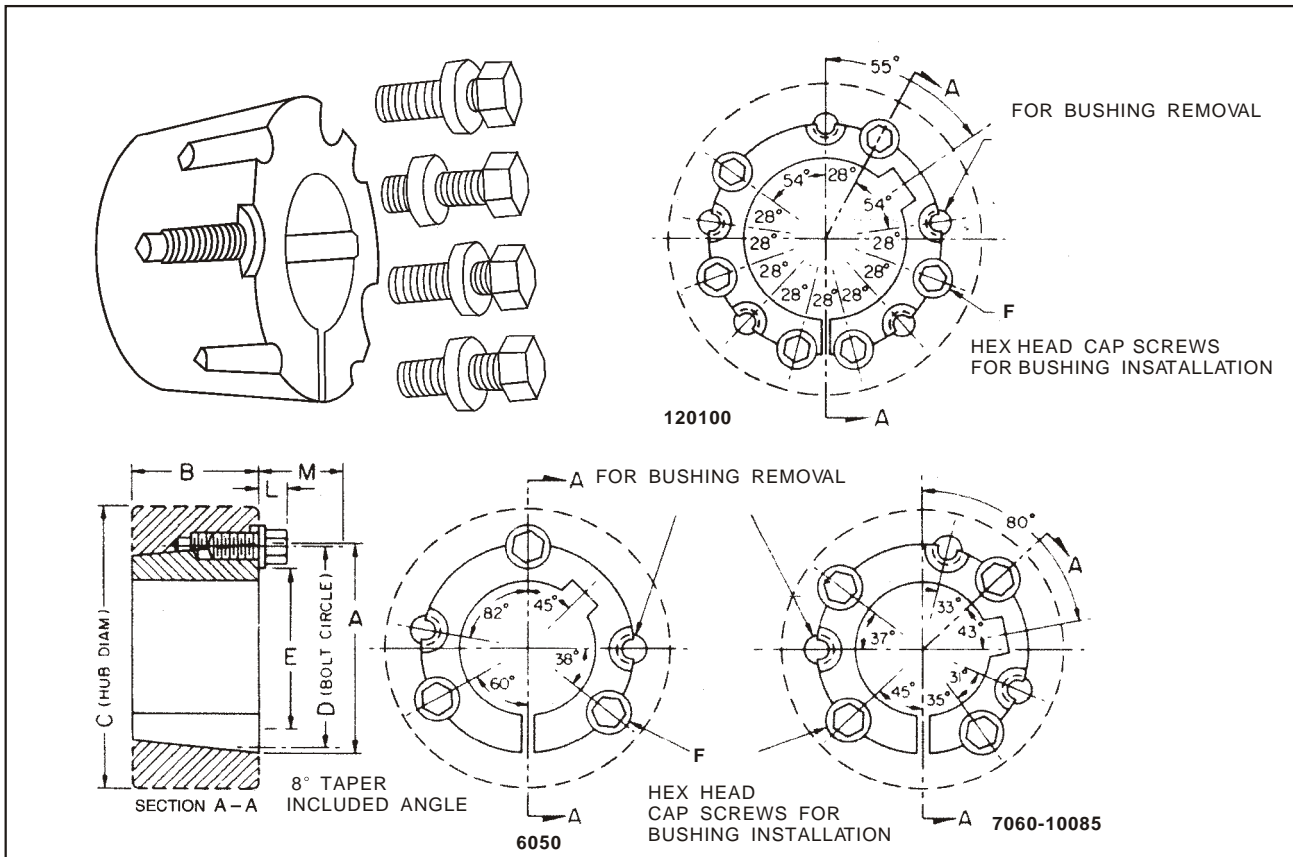
DIN 6885
 JIS B 1301-1976
 UNI 6604-1969
 GB 1095-1979

TAPER BUSHING KEYWAY

Bush. No.	Bore	Bushing Keyway	Bush. No.	Bore	Bushing Keyway	Bush. No.	Bore	Bushing Keyway	Bush. No.	Bore	Bushing Keyway	Bush. No.	Bore	Bushing Keyway	Bush. No.	Bore	Bushing Keyway										
1008	10	3×1.40	1610	14	5×2.30	2517	20	6×2.80	3020	25	8×3.30	3535	35	10×3.30	4545	55	16×4.30										
	11	4×1.80		16	6×2.80		22	8×3.30		28	10×3.30		38	12×3.30		60	18×4.40										
	12			18			24			30			40			42		45	48	50	75	20×4.90					
	14	5×2.30		19	6×2.80		25	8×3.30		32	10×3.30		35	12×3.30		42	14×3.80	45	16×4.30	70	25×5.40						
	16	6×2.80		20	8×3.30		28	10×3.30		35	12×3.30		38	14×3.80		40	16×4.30	48	18×4.40	55	20×4.90	80	22×5.40				
	18			22			30			40			42			45		48		50		75		85			
	19			24			25			28			30			32		35		38		40		42	45	48	50
	20	8×3.30		22	10×3.30		30	12×3.30		38	14×3.80		40	16×4.30		42	18×4.40	45	20×4.90	48	22×5.40	100	28×6.40				
	22			32			35			38			40			42		45		48		50		75	85	90	95
	24	8×2.00		32	10×3.30		40	12×3.30		45	14×3.80		50	16×4.30		55	18×4.40	60	20×4.90	65	22×5.40	105	28×6.40				
25	8×1.30	35	10×3.30	42	12×2.20	48	14×3.80	55	16×4.30	60	18×4.40	65	20×4.90	70	22×5.40	110											
1108	10	3×1.40	1615	14	5×2.30	2525	20	6×2.80	3030	25	8×3.30	4040	40	12×3.30	5050	60	18×4.40										
	11	4×1.80		16	6×2.80		22	8×3.30		28	10×3.30		30	12×3.30		32	14×3.80	42	18×4.40	65	20×4.90						
	12			18			24			30			32			35		38		40		42	45	48	50	75	85
	14	5×2.30		19	6×2.80		25	8×3.30		32	10×3.30		35	12×3.30		38	14×3.80	42	16×4.30	45	18×4.40	70	25×5.40				
	16	6×2.80		20	8×3.30		28	10×3.30		35	12×3.30		38	14×3.80		40	16×4.30	42	18×4.40	45	20×4.90	80	22×5.40				
	18			22			30			32			35			38		40		42		45		48	50	75	85
	19			24			25			28			30			32		35		38		40		42	45	48	50
	20	8×3.30		22	10×3.30		30	12×3.30		38	14×3.80		40	16×4.30		42	18×4.40	45	20×4.90	48	22×5.40	100	28×6.40				
	22			32			35			38			40			42		45		48		50		75	85	90	95
	24	8×2.00		32	10×3.30		40	12×3.30		45	14×3.80		50	16×4.30		55	18×4.40	60	20×4.90	65	22×5.40	115	32×7.40				
28	8×3.30	35	10×3.30	42	12×2.20	48	14×3.80	55	16×4.30	60	18×4.40	65	20×4.90	70	22×5.40	120											
30	10×3.30	38	12×3.30	42	14×3.80	50	16×4.30	60	18×4.40	70	20×4.90	80	22×5.40	90	25×5.40	125											
32		40		42		45		48		50		75		85		90	95										
1210	11	4×1.80	2012	18	6×2.80	2525	20	6×2.80	3030	25	8×3.30	4040	40	12×3.30	5050	60	18×4.40										
	12	4×1.80		16	6×2.80		22	8×3.30		28	10×3.30		30	12×3.30		32	14×3.80	42	18×4.40	65	20×4.90						
	14			18			24			30			32			35		38		40		42	45	48	50	75	85
	16	5×2.30		19	6×2.80		25	8×3.30		32	10×3.30		35	12×3.30		38	14×3.80	42	16×4.30	45	18×4.40	70	25×5.40				
	18	6×2.80		20	8×3.30		28	10×3.30		35	12×3.30		38	14×3.80		40	16×4.30	42	18×4.40	45	20×4.90	80	22×5.40				
	19			22			30			32			35			38		40		42		45		48	50	75	85
	20			24			25			28			30			32		35		38		40		42	45	48	50
	22	8×3.30		22	10×3.30		30	12×3.30		38	14×3.80		40	16×4.30		42	18×4.40	45	20×4.90	48	22×5.40	100	28×6.40				
	24			32			35			38			40			42		45		48		50		75	85	90	95
	25	8×3.30		32	10×3.30		40	12×3.30		45	14×3.80		50	16×4.30		55	18×4.40	60	20×4.90	65	22×5.40	115	32×7.40				
28	10×3.30	35	12×3.30	42	14×3.80	50	16×4.30	60	18×4.40	70	20×4.90	80	22×5.40	90	25×5.40	120											
30		40		42		45		48		50		75		85		90	95										
32	10×3.30	38	10×3.30	42	12×3.30	45	14×3.80	50	16×4.30	55	18×4.40	60	20×4.90	65	22×5.40	125											
1310	14	5×2.30	2012	18	6×2.80	2525	20	6×2.80	3030	25	8×3.30	4040	40	12×3.30	5050	60	18×4.40										
	16	5×2.30		16	6×2.80		22	8×3.30		28	10×3.30		30	12×3.30		32	14×3.80	42	18×4.40	65	20×4.90						
	18			18			24			30			32			35		38		40		42	45	48	50	75	85
	19	6×2.80		19	8×3.30		25	10×3.30		32	12×3.30		35	14×3.80		38	16×4.30	40	18×4.40	42	20×4.90	80	22×5.40				
	20			22			30			32			35			38		40		42		45		48	50	75	85
	22			24			25			28			30			32		35		38		40		42	45	48	50
	24	8×3.30		22	10×3.30		30	12×3.30		38	14×3.80		40	16×4.30		42	18×4.40	45	20×4.90	48	22×5.40	100	28×6.40				
	25			32			35			38			40			42		45		48		50		75	85	90	95
28	8×3.30	32	10×3.30	40	12×3.30	45	14×3.80	50	16×4.30	55	18×4.40	60	20×4.90	65	22×5.40	115	32×7.40										
30	10×3.30	35	12×3.30	42	14×3.80	50	16×4.30	60	18×4.40	70	20×4.90	80	22×5.40	90	25×5.40	120											
32		40		42		45		48		50		75		85		90	95										
35	10×3.30	38	10×3.30	42	12×3.30	45	14×3.80	50	16×4.30	55	18×4.40	60	20×4.90	65	22×5.40	125											

Taper Bushings

TAPER BUSHINGS DIMENSIONS (Con t.) 6050 thru 120100 Sizes



Dimensions for 6050 thru 120100 TAPER Bushings

Bush.No	A	B	D	Socket Head CapScrews	E	L	M
6050	9 ¹ / ₄	5	9	3 - 1 ¹ / ₄ × 3 ¹ / ₂	6 ³ / ₄	15 ⁵ / ₈	4 ³ / ₈
7060	10 ¹ / ₄	6	10	4 - 1 ¹ / ₄ × 3 ¹ / ₂	7 ³ / ₄	15 ⁵ / ₈	4 ³ / ₈
8065	11 ¹ / ₄	6 ¹ / ₂	11	4 - 1 ¹ / ₄ × 3 ¹ / ₂	8 ³ / ₄	15 ⁵ / ₈	4 ³ / ₈
10085	14 ³ / ₄	8 ¹ / ₂	14 ¹ / ₂	4 - 1 ¹ / ₂ × 4 ¹ / ₄	11 ³ / ₄	2	5 ³ / ₈
120100	17 ¹ / ₄	10	17	6 - 1 ¹ / ₂ × 4 ¹ / ₄	14 ¹ / ₄	2	5 ³ / ₈

Dimensions for TAER Bushing Metric.Inches Bore

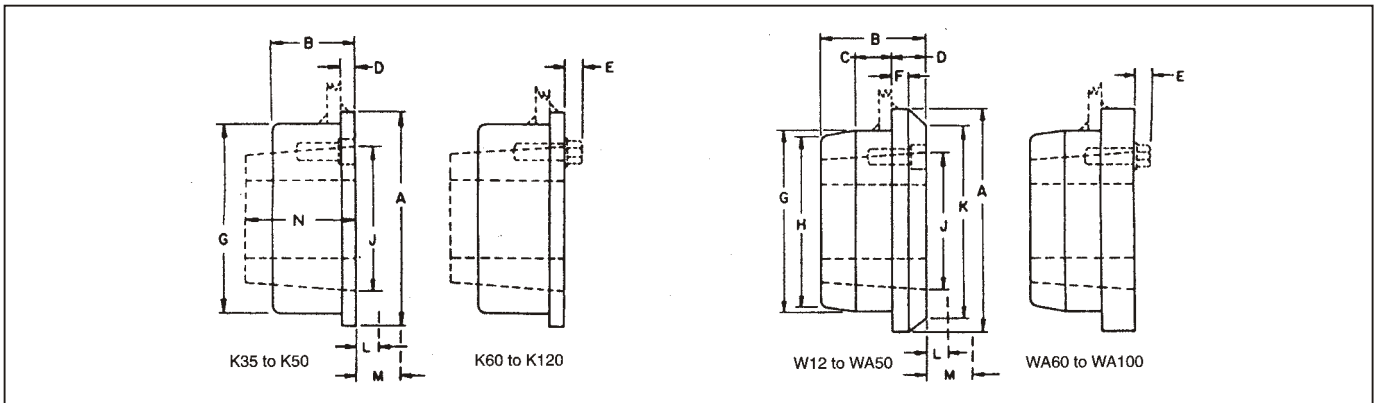
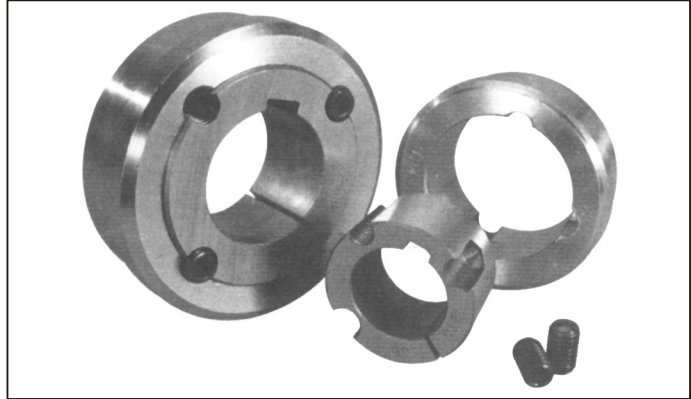
Bush.No.	Inches bore		metric bore	
	Min.	Max.	Min.	Max.
6050	4 ⁷ / ₁₆	6	80	150
7060	4 ¹⁵ / ₁₆	7	90	175
8065	5 ⁷ / ₁₆	8	110	200
10085	7	10	175	250
12100	8	12	200	300

For complete instructions refer to instruction sheet packed with each bushing.

Bore and keyway dimensions conform to ISO standard recommendation R773. for "free" fit.

Taper Bore Weld - on hubs

Taper Bore K & W / WA Weld- on hubs



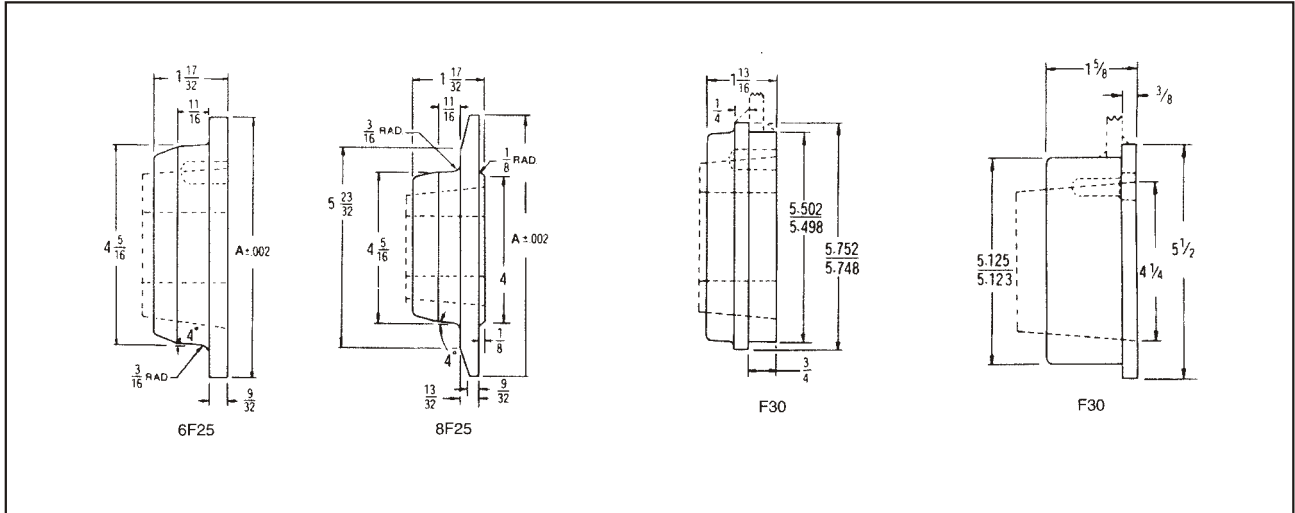
TAPER TYPE K WELD- ON HUBS

HUB NO.	BUSH NO.	BORE	A	B	D	E	G	J	L	M	N	WT
K25	2517	1 ~ 2 1/2	4 7/8	1 1/2	3/8	—	4 3/4	3 3/8	1 5/8	2 1/4	1 3/4	6.3
K30	3020	1 15/16 ~ 3	5 1/2	1 5/8	3/4	—	5 1/8	4 1/4	1 11/16	2 11/16	2	7.8
K35	3535	1 3/16 ~ 3 15/16	6 3/4	1 5/8	1/2	—	6 1/4	5	2	3 3/8	3 1/2	9.8
K40	4040	1 7/16 ~ 4 7/16	7 3/4	2 1/8	1/2	—	7 1/4	5 3/4	2 3/8	4 1/8	4	10.8
K45	4545	1 15/16 ~ 4 1/2	8 1/2	2 5/8	5/8	—	8	6 3/8	2 5/8	4 3/4	4 1/2	15.2
K50	5050	2 7/16 ~ 5	9 1/4	2 7/8	5/8	—	8 3/4	7	2 13/16	5 1/4	5	29
K60	6050	3 7/16 ~ 6	12 3/4	2 7/8	5/8	1 7/16	12 1/4	9 1/4	1 5/8	4 3/8	5	44
K70	7060	3 15/16 ~ 7	14 1/4	3 3/8	3/4	1 7/16	13 1/2	10 1/4	1 5/8	4 3/8	6	60
K80	8065	4 7/16 ~ 8	14 3/4	3 5/8	3/4	1 7/16	14 1/4	11 1/4	1 5/8	4 3/8	6 1/2	65
K100	10085	7 ~ 10	19 1/4	4 1/8	1	1 3/4	18 3/4	14 3/4	2	5 3/8	8 1/2	128
K120	120100	8 ~ 12	22 1/4	5 3/8	1	1 3/4	21 3/4	17 1/4	2	5 3/8	10	225

TAPER TYPE W-WA WELD - ON HUBS

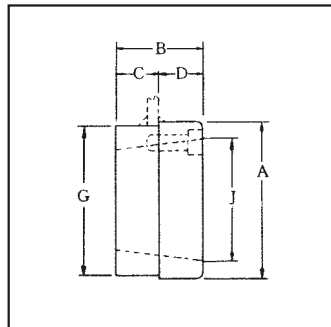
HUB NO.	BUSH NO.	BORE	A	B	C	D	E	F	G	H	J	K	L	M	WT
W12	1215	1/2 ~ 1 1/4	2 7/8	1 1/2	—	5/8	—	3/8	2 1/2	—	1 7/8	2 5/8	1 3/8	1 5/8	1.2
W16	1615	1/2 ~ 1 5/8	3 1/4	1 1/2	—	5/8	—	3/8	2 7/8	—	2 1/4	3	1 3/8	1 5/8	1.3
W25	2517	1/2 ~ 2 1/2	4 7/8	1 3/4	—	3/4	—	3/8	4 3/8	—	3 3/8	4 5/8	1 5/8	2 1/4	3.8
WA35	3030	15/16 ~ 3	5 1/2	3	3/4	3/4	—	1/2	5 1/8	4 13/16	4 1/4	5	1 13/16	2 11/16	8.6
WA35	3535	1 3/16 ~ 3 15/16	6 3/4	3 1/2	1 1/4	1	—	5/8	6 1/4	5 15/16	5	6	2	3 3/8	15
WA40	4040	1 7/16 ~ 4 7/16	7 3/4	4	1 1/2	1	—	5/8	7 1/4	6 7/8	5 3/4	7	2 3/8	4 1/8	29
WA45	4545	1 15/16 ~ 4 15/16	8 3/4	4 1/2	1 3/4	1	—	5/8	8	7 5/8	6 3/8	8	2 5/8	4 3/4	42
WA50	5050	2 7/16 ~ 5	9 1/2	5	1 3/4	1	—	5/8	8 3/4	8 3/8	7	8 3/4	2 3/16	5 1/4	57
WA60	6050	3 7/16 ~ 6	13 1/4	5	1 3/4	1 1/4	1 7/16	—	12 1/4	11 7/8	9 1/4	—	1 5/8	4 3/8	115
WA70	7060	3 15/16 ~ 7	14 1/2	6	2 1/4	1 1/4	1 7/16	—	13 1/2	13 1/4	10 1/4	—	1 5/8	4 3/8	158
WA80	8065	4 7/16 ~ 8	15 1/4	6 1/2	2 1/4	1 1/4	1 7/16	—	14 1/4	14	11 1/4	—	1 5/8	4 3/8	180
WA100	10085	7 ~ 10	19 3/4	8 1/2	3 1/2	1 1/2	1 3/4	—	18 3/4	18 1/4	14 3/4	—	2	5 3/8	340

Taper Bore Weld - on hubs



TAPER TYPE F WELD- ON HUBS

HUB NO.	BUSH NO.	MAX.BORE	A O.D.	W t	HUB NO.	BUSH NO.	MAX.BORE	A O.D.	W t
6F25P	2517	2-1/2	6.048	3.9	8F25P	2517	2-1/2	7.962	6.3
6F25A	2517	2-1/2	5.685	3.8	8F25A	2517	2-1/2	7.685	6.2
6F25B	2517	2-1/2	5.664	3.8	8F25B	2517	2-1/2	7.664	6.2
6F25C	2517	2-1/2	5.625	3.8	8F25C	2517	2-1/2	7.625	6.2
6F25D	2517	2-1/2	5.579	3.8	8F25D	2517	2-1/2	7.579	6.2
6F25E	2517	2-1/2	5.537	3.8	8F25E	2517	2-1/2	7.537	6.2
F30	3020	3		5.3					

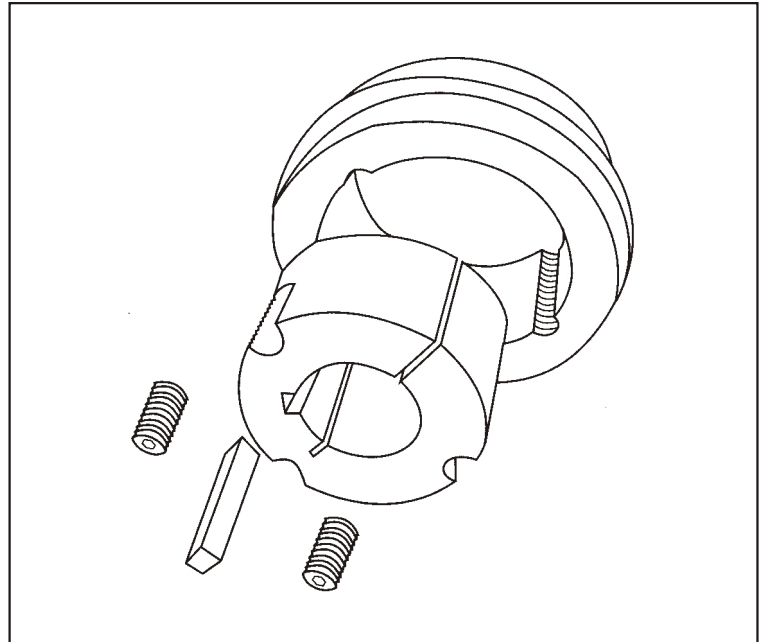


TAPER TYPE S WELD- ON HUBS

HUB NO.	BUSH NO.	MAX.BORE	A	B	C	D	G	J	W T
S16-4	1610	1 ⁵ / ₈	3	1	0.275	0.725	2 ⁷ / ₈	2 ¹ / ₄	0.9
S16-6	1610	1 ⁵ / ₈	3	1	0.450	0.550	2 ⁷ / ₈	2 ¹ / ₄	0.9
S20-6	2012	2	3 ⁹ / ₁₆	1 ¹ / ₄	0.450	0.800	3 ⁷ / ₁₆	2 ³ / ₄	1.8
S20-8	2012	2	3 ⁹ / ₁₆	1 ¹ / ₄	0.570	0.680	3 ⁷ / ₁₆	2 ³ / ₄	1.4
S25-6	2517	2 ¹ / ₂	4 ¹ / ₄	1 ³ / ₄	0.450	1.300	4 ¹ / ₈	3 ³ / ₈	2.6
S25-8	2517	2 ¹ / ₂	4 ¹ / ₄	1 ³ / ₄	0.565	1.185	4 ¹ / ₈	3 ³ / ₈	2.6
S25-10	2517	2 ¹ / ₂	4 ¹ / ₄	1 ³ / ₄	0.685	1.065	4 ¹ / ₈	3 ³ / ₈	2.5
S25-16	2517	2 ¹ / ₂	4 ¹ / ₄	1 ³ / ₄	1.090	0.660	4 ¹ / ₈	3 ³ / ₈	2.4
S30-10	3020	3	5 ¹ / ₄	2	0.675	1.325	5 ¹ / ₈	4 ¹ / ₄	4.3
S30-16	3020	3	5 ¹ / ₄	2	1.090	0.910	5 ¹ / ₈	4 ¹ / ₄	4.2
S35	3535	3 ¹⁵ / ₁₆	6 ¹ / ₂	3 ¹ / ₂	1.160	2.340	6 ³ / ₈	5	12.8

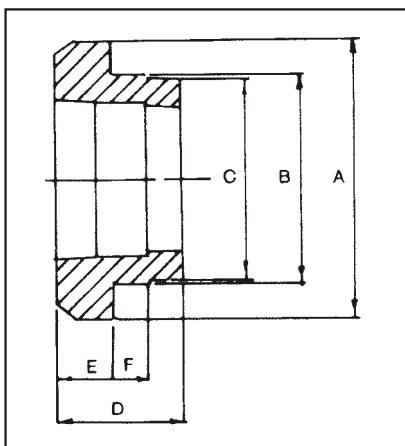
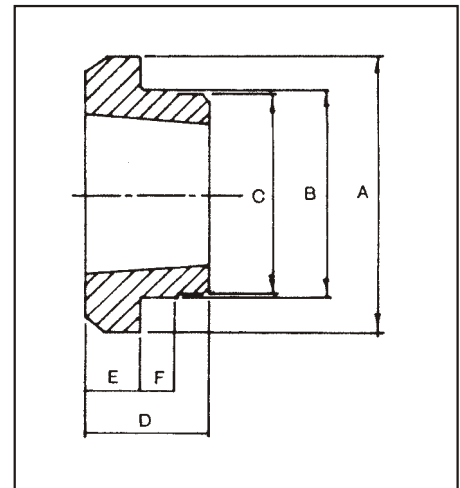
Taper Bore Weld - on hubs

TAPER BORE W & WH Weld-on hubs



W WELD - ON HUBS

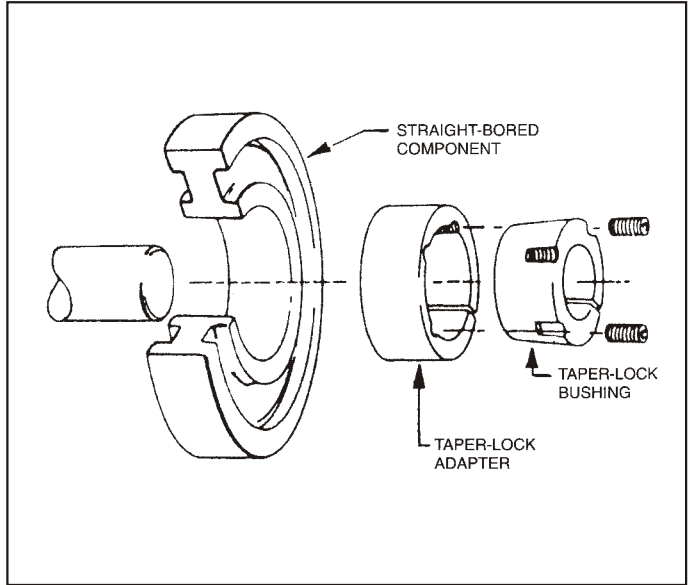
Hub Ref.	Bush no.	A	B	C	D	E	F
W12	1215	73.03	63.50	62.71	38.10	15.88	9.53
W16	1615	82.55	73.03	72.24	38.10	15.88	9.53
W20	2017	101.60	88.90	88.11	44.45	19.05	14.45
W25	2517	127.00	111.13	110.34	44.45	19.05	14.45
W30	3030	149.86	133.35	132.56	76.20	25.40	19.05
W35	3535	184.15	158.75	157.96	88.90	31.75	25.40
W40	4040	225.43	196.85	196.06	101.60	31.75	31.75
W45	4545	254.00	222.25	221.46	114.30	38.10	38.10



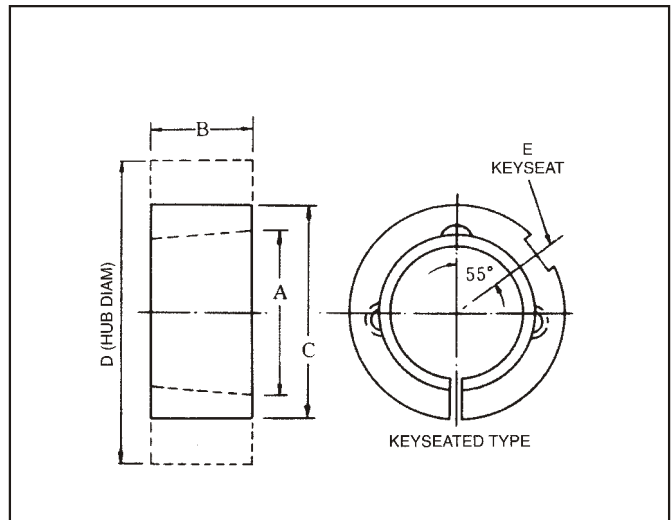
WH WELD - ON HUBS

Hub Ref.	Bush no.	A	B	C	D	E	F
WH12	1210	70	65	64.5	25	9	10
WH16-1	1610	80	75	74.5	25	9	10
WH20	2012	95	90	89.5	32	12	12
WH25	2517	115	110	109.5	44	19	15
WH30-2	3020	145	140	139.5	50	20	15
WH35	3525	190	180	179.5	65	25	25
WH40	4040	200	190	189.5	101	32	30
WH45	4545	210	200	199.5	114	40	30
WH50	5050	230	220	219.5	127	40	45

Taper Bore Adapters



TAPER BORE ADAPTERS

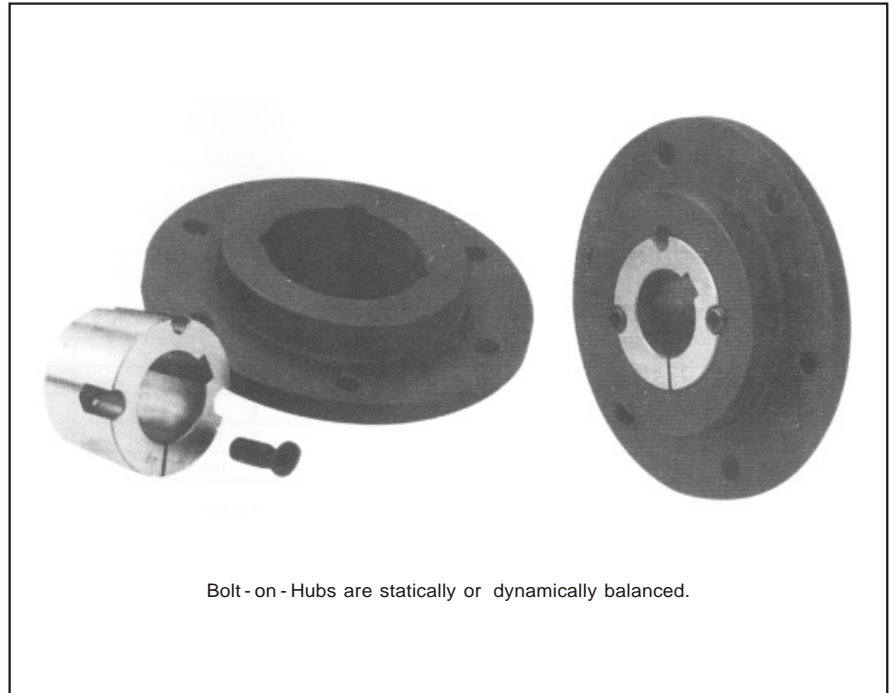
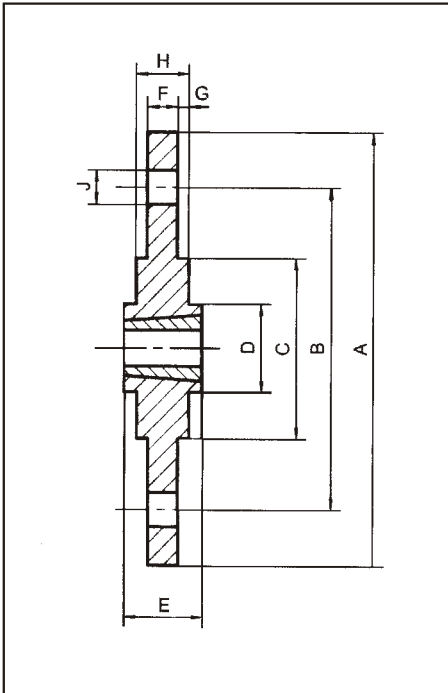


TAPER TYPE F WELD- ON HUBS

Adapter No.	Bush No.	A	B	C	D			E Keyseat	Wt
					Class 20 Gray Iron	Class 30 Gray Iron	Steel		
1215B	1215	1 7/8	1 1/2	2 3/8	3 5/8	3 3/8	3 1/4	1/4 1/8	0.7
1615B	1615	2 1/4	1 1/2	2 3/4	4	3 3/4	3 1/2	3/8 1/8	0.9
2517B	2517	3 3/8	1 3/4	4 1/8	5 7/8 Δ	5 1/2	5	5/8 1/8	2.2
2525B	2525	3 3/8	2 1/2	4 1/8	5 1/2 Δ	5 1/4	5	5/8 1/8	3.2
3030B	3030	4 1/4	3	5 1/8	7 3/8 Δ	6 7/8	6 1/4	3/4 3/16	5.8
3535B	3535	5	3 1/2	6 1/4	9 1/8	8 3/8	7 7/8	7/8 3/16	11.3
4040B	4040	5 3/4	4	7 1/4	11 1/8	10 1/8	9 3/8	1 3/16	17.3
4545B	4545	6 3/8	4 1/2	7 7/8	12	11	10 1/4	1 3/16	21.9

Taper Bore Bolt - on hubs

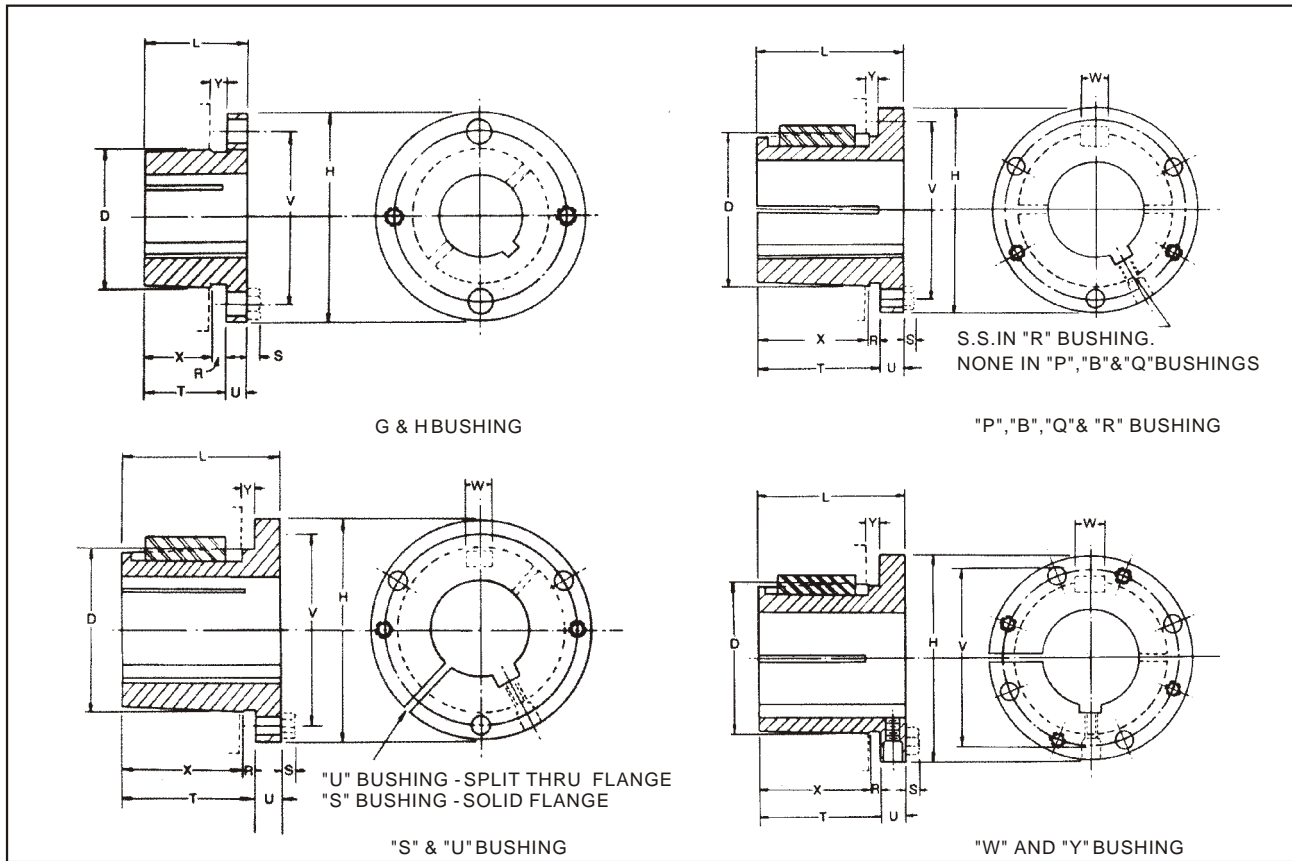
Taper Bore Bolt - on hubs



specification	Bush No.	main dimension								screw hole nxJ
		A	B	C _{hp}	D	E	F	G	H	
SM1200	1210	180	135	90	75	25	6.5	2.5	11.5	6×Φ7.5
SM1600	1615	200	150	110	85	38	7.5	2.5	12.5	6×Φ7.5
SM2000	2012	270	190	140	110	32	8.5	2.5	13.5	6×Φ9.5
SM2500	2517	340	240	170	125	45	9.5	2.5	14.5	8×Φ11.5
SM30-1	3020	430	300	220	160	51	13.5	2.5	18.5	8×Φ13.5
SM30-2	3020	485	340	250	160	51	13.5	2.5	18.5	8×Φ13.5
SM1210	1210	120	100	80	75	25	6.5	2.5	11.5	8×Φ7.5
SM1610	1610	130	110	90	85	25	7.5	2.5	12.5	8×Φ7.5
SM2012*	2012	145	125	115	110	32	8.5	2.5	13.5	8×Φ7.5
SM2517	2517	185	155	130	125	45	9.5	2.5	14.5	8×Φ11.5
SM3020	3020	220	190	160	160	51	13.5	2.5	18.5	8×Φ13.5

* Can only be installed from one side

Split Taper Bushings

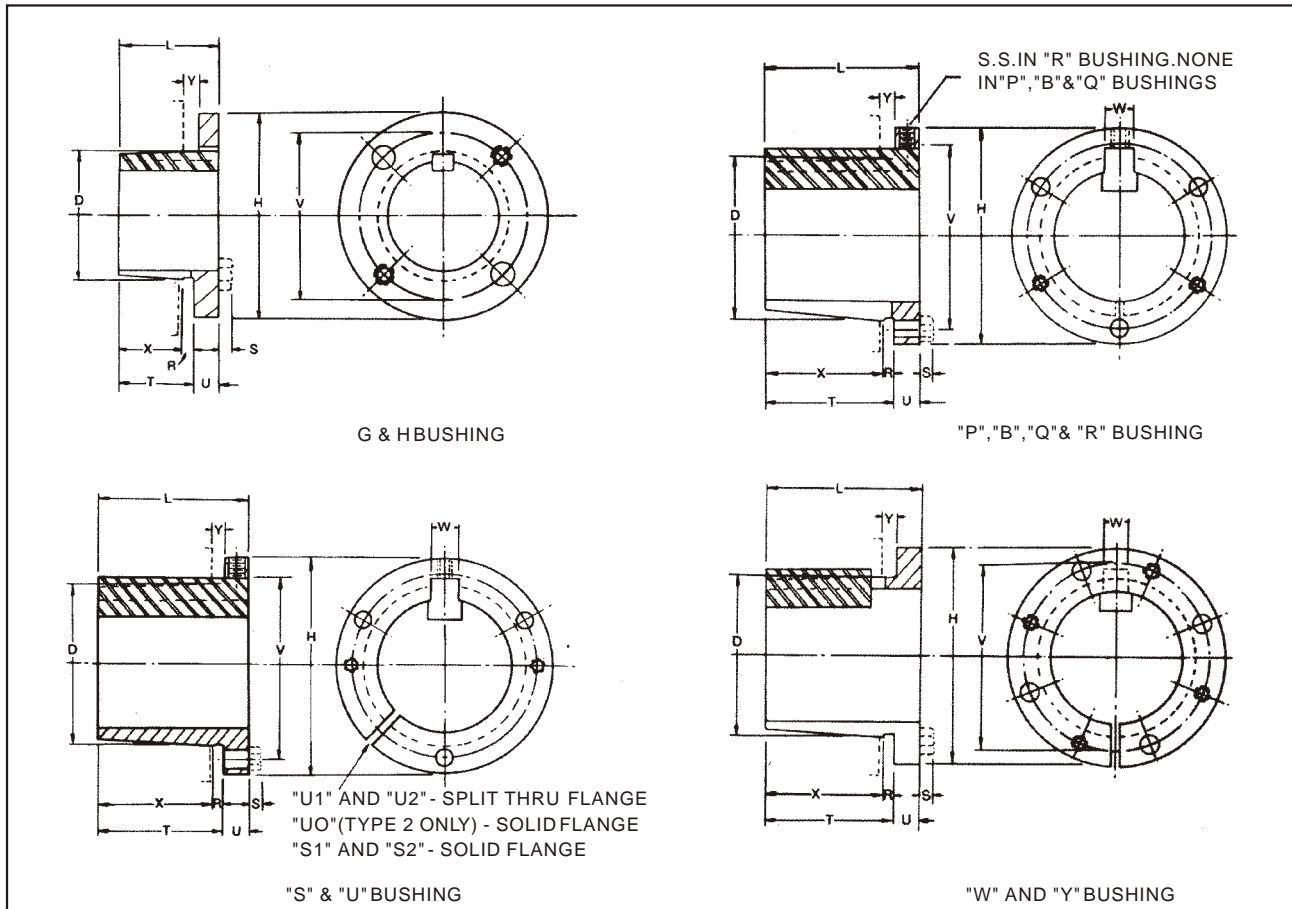


TYPE 1

Bushing Specifications

Part No.	Dimensions												Type 1 Bore Range	Cap Screws		Av. Wt. Lbs.
	L	U	T	D		H	V	W	X	Y	R	S		No.	Size	
				Large End	Small End											
G	1"	1/4"	3/4"	1.172"	1.133"	2"	19/16"		5/8"	3/16"	1/8"	3/16"	3/8" - 15/16"	2	1/4 X 5/8"	.5
H	1 1/4	1/4	1	1.625	1.570	2 1/2	2		7/8	3/16	1/8	3/16	3/8 - 13/8	2	1/4 X 3/4	.8
P1	1 15/16	13/32	1 17/32	1.9375	1.8555	3	2 7/16	3/8"	15/16	7/32	7/32	1/4	1/2 - 17/16	3	5/16 X 1	1.3
P2	2 15/16	13/32	2 17/32	1.9375	1.7930	3	2 7/16	3/8	25/16	7/32	7/32	1/4	3/4 - 17/16	3	5/16 X 1	1.5
P3	4 7/16	13/32	4 1/32	1.9375	1.6993	3	2 7/16	3/8	3 13/16	7/32	7/32	1/4	1 1/8 - 13/8	3	5/16 X 1	2
B	1 15/16	1/2	1 7/16	2.625	2.5567	3 11/16	3 1/8	1/2	1 3/16	7/32	1/4	1/4	1/2 - 1 15/16	3	5/16 X 1 1/4	1.8
Q1	2 1/2	17/32	1 31/32	2.875	2.7657	4 1/8	3 3/8	1/2	1 3/4	7/32	7/32	9/32	3/4 - 2 1/16	3	3/8 X 1 1/4	3.5
Q2	3 1/2	17/32	2 31/32	2.875	2.7032	4 1/8	3 3/8	1/2	2 3/4	7/32	7/32	9/32	1 - 2 1/16	3	3/8 X 1 1/4	4.5
Q3	5	17/32	4 15/32	2.875	2.6094	4 1/8	3 3/8	1/2	4 1/4	7/32	7/32	9/32	1 3/8 - 2 1/16	3	3/8 X 1 1/4	5.5
R1	2 7/8	5/8	2 1/4	4.000	3.8750	5 3/8	4 5/8	3/4	2	1/4	1/4	9/32	1 1/8 - 2 13/16	3	3/8 X 1 3/4	7.5
R2	4 7/8	5/8	4 1/4	4.000	3.7500	5 3/8	4 5/8	3/4	4	1/4	1/4	9/32	1 3/8 - 2 13/16	3	3/8 X 1 3/4	11
S1	4 3/8	3/4	3 5/8	4.625	4.4180	6 3/8	5 3/8	3/4	35/16	5/16	5/16	3/8	1 11/16 - 3 3/16	3	1/2 X 2 1/4	13.5
S2	6 3/4	3/4	6	4.625	4.2696	6 3/8	5 3/8	3/4	5 11/16	5/16	5/16	3/8	1 7/8 - 3 3/16	3	1/2 X 2 1/4	19
U0	5 1/4	1 1/16	4 3/16	6.000	5.7656	8 3/8	7	1 1/4	3 3/4	7/16	7/16	15/32	2 3/8 - 3 1/16	3	5/8 X 2 3/4	30
U0	4 15/16	3/4	4 3/16	6.000	5.7656	8 3/8	7	1 1/4	3 3/4	7/16	7/16	15/32	3 1/4 - 4 1/4	3	5/8 X 2 3/4	27
U1	7 1/8	1 1/16	6 1/16	6.000	5.6485	8 3/8	7	1 1/4	5 5/8	4/16	7/16	15/32	2 3/8 - 4 1/4	3	5/8 X 2 3/4	40
U2	10 1/8	1 1/16	9 1/16	6.000	5.4610	8 3/8	7	1 1/4	8 5/8	7/16	7/16	15/32	2 7/16 - 4 1/4	3	5/8 X 2 3/4	50
W1	8 1/4	1 7/16	6 13/16	8.500	8.1016	12 1/2	10	1 1/4	6 3/8	7/16	7/16	9/16	3 3/8 - 6 3/16	4	3/4 X 3	104
W2	11 1/4	1 7/16	9 13/16	8.500	7.9141	12 1/2	10	1 1/4	9 3/8	7/16	7/16	9/16	3 3/8 - 6 3/16	4	3/4 X 3	133
Y0*	11 1/8	2	9 1/8	12.000	11.4688	16 1/2	14 1/2	2	8 1/2	5/8	5/8	5/8	6 - 7 15/16	4	1 X 5	270

Split Taper Bushings



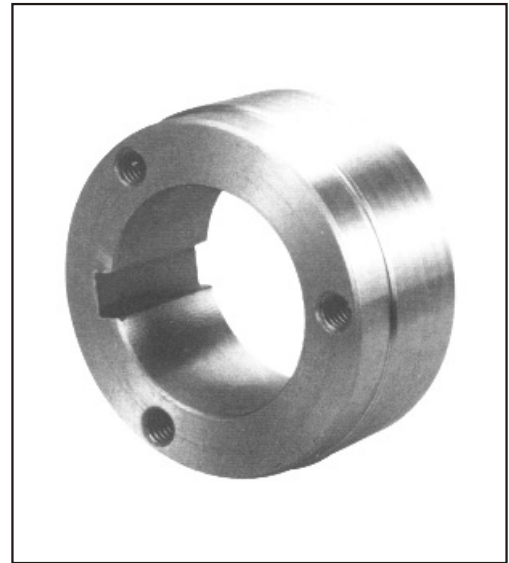
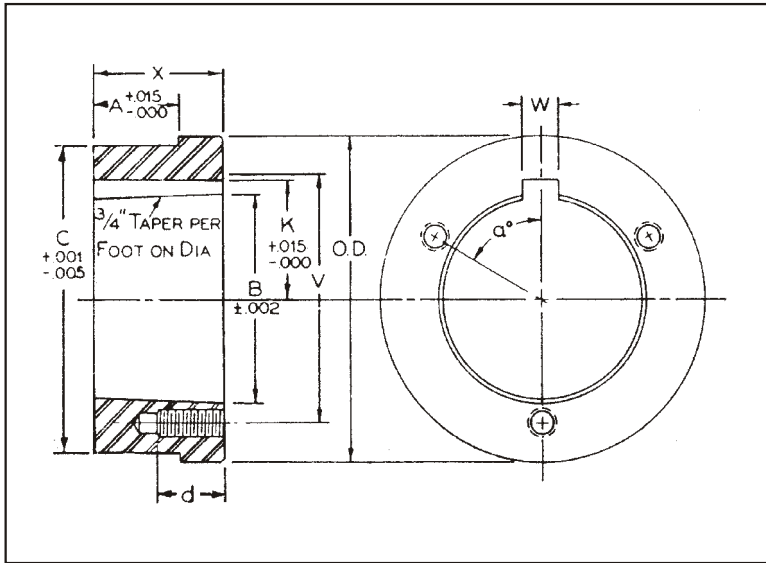
TYPE 2

Bushing Specifications

Part No.	Dimensions												Type 2 Bore Range	Cap Screws		Av. Wt. Lbs.
	L	U	T	D		H	V	W	X	Y	R	S		No.	Size	
				Large End	Small End											
G	1"	1/4"	3/4"	1.172"	1.133"	2"	19/16"	-	5/8"	3/16"	1/8"	3/16"	1"	2	1/4" X 5/8"	.5
H	1 1/4	1/4	1	1.625	1.570	2 1/2	2	-	7/8	3/16	1/8	3/16	1 7/16 - 1 1/2	2	1/4 X 3/4	.8
P1	115/16	13/32	117/32	1.9375	1.8555	3	27/16	3/8"	1 5/16	7/32	7/32	1/4	1 1/2 - 1 3/4	3	5/16 X 1	1.3
P2	215/16	13/32	217/32	1.9375	1.7930	3	27/16	3/8	2 5/16	7/32	7/32	1/4	1 1/2 - 1 3/4	3	5/16 X 1	1.5
P3	47/16	13/32	41/32	1.9375	1.6993	3	27/16	3/8	3 13/16	7/32	7/32	1/4	1 5/8	3	5/16 X 1	2
B	115/16	1/2	17/16	2.625	2.5567	3 11/16	3 1/8	1/2	1 3/16	7/32	1/4	1/4	2 - 27/16	3	5/16 X 1 1/4	1.8
Q1	2 1/2	17/32	131/32	2.875	2.7657	4 1/8	3 3/8	1/2	1 3/4	7/32	7/32	9/32	2 1/8 - 2 11/16	3	3/8 X 1 1/4	3.5
Q2	3 1/2	17/32	231/32	2.875	2.7032	4 1/8	3 3/8	1/2	2 3/4	7/32	7/32	9/32	2 1/8 - 2 5/8	3	3/8 X 1 1/4	4.5
Q3	5	17/32	415/32	2.875	2.6094	4 1/8	3 3/8	1/2	4 1/4	7/32	7/32	9/32	2 1/8 - 2 1/2	3	3/8 X 1 1/4	5.5
R1	27/8	5/8	2 1/4	4.000	3.8750	5 3/8	4 5/8	3/4	2	1/4	1/4	9/32	2 7/8 - 3 3/4	3	3/8 X 1 3/4	7.5
R2	47/8	5/8	4 1/4	4.000	3.7500	5 3/8	4 5/8	3/4	4	1/4	1/4	9/32	2 7/8 - 3 5/8	3	3/8 X 1 3/4	11
S1	43/8	3/4	3 5/8	4.625	4.4180	6 3/8	5 3/8	3/4	3 5/16	5/16	5/16	3/8	3 1/4 - 4 1/4	3	1/2 X 2 1/4	13.5
S2	6 3/4	3/4	6	4.625	4.2696	6 3/8	5 3/8	3/4	5 11/16	5/16	5/16	3/8	3 1/4 - 4 3/16	3	1/2 X 2 1/4	19
U0	5 1/4	1 1/16	43/16	6.000	5.7656	8 3/8	7	1 1/4	3 3/4	7/16	7/16	15/32	-	3	5/8 X 2 3/4	30
U1	415/16	3/4	43/16	6.000	5.7656	8 3/8	7	1 1/4	3 3/4	7/16	7/16	15/32	4 3/8 - 5 1/2	3	5/8 X 2 3/4	27
U0	7 1/8	1 1/16	61/16	6.000	5.6485	8 3/8	7	1 1/4	5 5/8	7/16	7/16	15/32	4 3/8 - 5 1/2	3	5/8 X 2 3/4	40
U2	10 1/8	1 1/16	91/16	6.000	5.4610	8 3/8	7	1 1/4	8 5/8	7/16	7/16	15/32	4 3/8 - 5	3	5/8 X 2 3/4	50
W1	8 1/4	17/16	613/16	8.500	8.1016	12 1/2	10	1 1/4	6 3/8	7/16	7/16	9/16	6 1/4 - 7 7/16	4	3/4 X 3	104
W2	11 1/4	17/16	913/16	8.500	7.9141	12 1/2	10	1 1/4	9 3/8	7/16	7/16	9/16	6 1/4 - 7 7/16	4	3/4 X 3	133
Y0*	11 1/8	2	9 1/8	12.000	11.4688	16 1/2	14 1/2	2	8 1/2	5/8	5/8	5/8	8 - 10	4	1 X 5	270

Steel Hubs For Split Taper Bushings

STEEL HUBS FOR SPLIT TAPER BUSHINGS



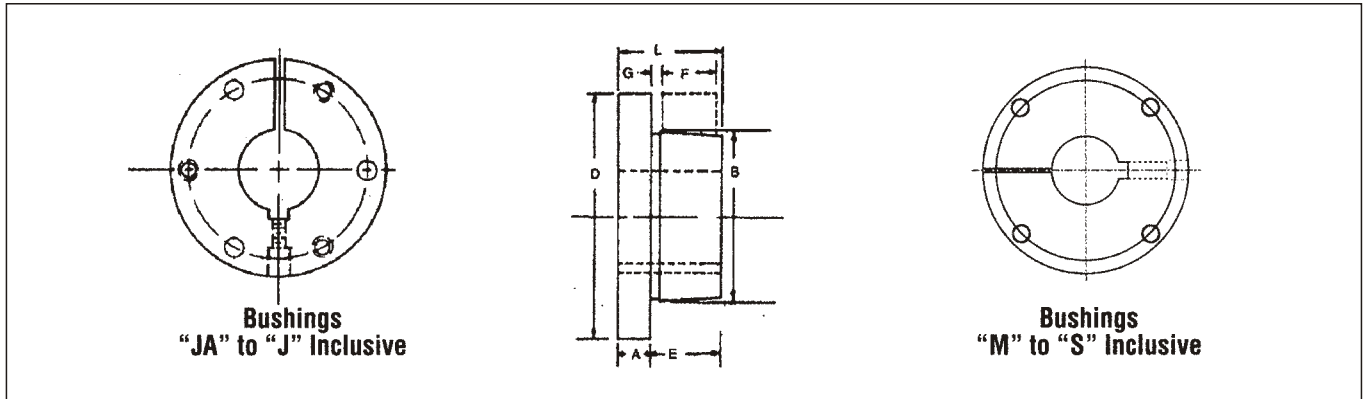
STEEL HUBS FOR SPLIT TAPER BUSHINGS

Part No.	For Bushing	Dimensions									Tapped Holes			Wt Lbs.
		O.D.	A	B	C	K	V	W	X	a	d	No.	Size	
HG1	G	2"	.174"	1.168	1.875"	-	1 ⁹ / ₁₆ "	-	5 ⁹ / ₈ "	-	5 ⁹ / ₈ "	2	1/4 - 20	.4
HH1	H	2 1/2	.174	1.621	2.375	-	2	-	7/8	-	7/8	2	1/4 - 20	.6
HCH1	H	2 1/2	.625	1.621	2.375	-	2	-	7/8	-	7/8	2	1/4 - 20	.7
HP1	P1	3	.292	1.9375	2.875	1 ³ / ₃₂	2 ⁷ / ₁₆	3/8	1 ⁵ / ₁₆	60°	5/8	3	5/16 - 18	1.4
HCP1	P1	3	1.000	1.9375	2.875	1 ³ / ₃₂	2 ⁷ / ₁₆	3/8	1 ⁵ / ₁₆	60°	5/8	3	5/16 - 18	1.1
HP2	P2	3	1.100	1.9375	2.875	1 ³ / ₃₂	2 ⁷ / ₁₆	3/8	2 ⁵ / ₁₆	60	5/8	3	5/16 - 18	2.5
HB1	B	3 ⁷ / ₈	.292	2.623	3.750	1 ⁷ / ₁₆	3 ¹ / ₈	1/2	1 ⁵ / ₁₆	60	1 ³ / ₁₆	3	5/16 - 18	2.3
HB2	B	4 1/2	.709	2.623	4.375	1 ⁷ / ₁₆	3 ¹ / ₈	1/2	1 ³ / ₄	60	1 ³ / ₁₆	3	5/16 - 18	4.7
HQ1	Q1	4 1/2	.709	2.875	4.375	1 ⁹ / ₁₆	3 ³ / ₈	1/2	1 ³ / ₄	60	7/8	3	3/8 - 16	4.4
HQC1	Q1	4 1/2	1.250	2.875	4.375	1 ⁹ / ₁₆	3 ³ / ₈	1/2	1 ³ / ₄	60	7/8	3	3/8 - 16	4.4
HQ2	Q2	4 1/2	1.606	2.875	4.375	1 ⁹ / ₁₆	3 ³ / ₈	1/2	2 ³ / ₄	60	7/8	3	3/8 - 16	6.9
HR1	R1	5 ³ / ₄	.709	4.000	5.625	2 ³ / ₁₆	4 ⁵ / ₈	3/4	2	60	1 1/8	3	3/8 - 16	7.3
HR2	R2	5 ³ / ₄	1.606	4.000	5.625	2 ³ / ₁₆	4 ⁵ / ₈	3/4	4	60	1 1/8	3	3/8 - 16	15.4
HS1	S1	6 ³ / ₄	.946	4.625	6.500	2 ⁹ / ₁₆	5 ³ / ₈	3/4	3 ⁵ / ₁₆	60	1 ⁵ / ₈	3	1/2 - 13	17.3
HS2	S2	6 ³ / ₄	2.963	4.625	6.500	2 ⁹ / ₁₆	5 ³ / ₈	3/4	5 ¹¹ / ₁₆	60	1 ⁵ / ₈	3	1/2 - 13	30.4
HU0	U0	8 1/2	2.000	6.000	8.250	3 ¹ / ₄	7	1 ¹ / ₄	3 ³ / ₄	60	2	3	5/8 - 11	32.0
HU1	U1	8 1/2	2.963	6.000	8.250	3 ¹ / ₄	7	1 ¹ / ₄	5 ⁵ / ₈	60	1 ³ / ₄	3	5/8 - 11	44.6
HU2	U2	8 1/2	6.016	6.000	8.250	3 ¹ / ₄	7	1 ¹ / ₄	8 ⁵ / ₈	60	1 ³ / ₄	3	5/8 - 11	69.0
Hw1	W1	12 1/2	2.963	8.500	12.250	4 ⁹ / ₁₆	10	1 ¹ / ₄	6 ³ / ₈	22 1/2	1 ³ / ₄	4	3/4 - 10	130.0

Standard "QD" Bushings

★ F=length of Mating Bore

★★ G=Gap Between | °QD | ± Bushing and Mating Hub



"QD" Bushings-Steel

Bushing	Dimensions(Inches)								Screws Required	Stock Bore Range			Average Weight (Approx.)
	A	B	D	E	F	G	L	Cap Bolt Circle		Minimum	Standard Keyway	Shallow Keyway	
SF-STL	3/8	3.125	4 3/8	1 1/2	1 1/2	3/8	2 1/8	3 3/8	3 3/8 A2	1/2	2 3/8	2 1/8	3.0
E-STL	1/2	3.834	6	1 3/4	1 3/4	3/8	2 3/8	5	3 1/2 A2	3/4	2 3/4	3 3/8	10.0
F-STL	5/8	4.437	6 3/8	2 1/8	2 1/2	3/8	3 3/8	5 1/2	3 3/8 A2	1	3 3/8	4	11.5
J-STL	1	5.148	7 1/4	3 1/2	3 3/8	3/8	4 1/2	6 1/4	3 3/8 A2	1 1/8	3 3/4	4 1/2	18.0
M-STL	1 1/4	6.500	9	5 1/2	5 3/8	3/8	6 3/8	7 3/4	4 1/2 A2	2	4 3/4	5 1/2	37.0
N-STL	1 1/2	7.000	10	6 3/8	6 3/4	3/8	8 3/8	8 3/4	4 3/8 A2	2 1/2	5 3/4	5 3/4	57.0

Bushing	Bores	Keyway
SF-STL	2 3/8 - 2 3/8	3/8 i A ₆
	2 3/8 - 2 3/4	3/8 i A ₆
	2 3/8 - 2 3/4	3/8 i A ₆
E-STL	1 - 2 1/8	STD.
	2 3/8 - 3 1/4	3/8 i A ₆
	3 3/8 - 3 1/2	3/8 i A ₆
F-STL	1 - 3 3/8	STD.
	3 3/8 - 3 3/4	3/8 i A ₆
	3 3/8 - 3 3/8	1 i A ₆
J-STL	3 3/8 - 3 3/4	STD.
	3 3/8 - 4 1/4	1 i A ₆
	4 1/4 - 5 1/2	1 1/2 i A ₆
M-STL	2 - 4 1/4	STD.
	4 1/4 - 5 1/2	1 1/2 i A ₆
	5 1/4 - 5 1/4	1 1/2 i A ₆
N-STL	2 1/2 - 5 1/4	STD.
	5 1/4 - 5 1/4	1 1/2 i A ₆
	5 1/4 - 5 1/4	1 1/2 i A ₆

Shallow Key Dimension-Standard			
Key Seat.	Key	Keyway	Key
1/2 i A ₆	1/2 i A ₆	3/8 i A ₆	3/8 i A ₆
3/4 i A ₆	3/4 i A ₆	1/2 i A ₆	1/2 i A ₆
1 i A ₆	1 i A ₆	3/4 i A ₆	3/4 i A ₆
1 1/4 i A ₆	1 1/4 i A ₆	1 i A ₆	1 i A ₆
1 1/2 i A ₆	1 1/2 i A ₆	1 1/4 i A ₆	1 1/4 i A ₆
1 3/4 i A ₆	1 3/4 i A ₆	1 1/2 i A ₆	1 1/2 i A ₆
2 i A ₆	2 i A ₆	1 3/4 i A ₆	1 3/4 i A ₆
2 1/4 i A ₆	2 1/4 i A ₆	2 i A ₆	2 i A ₆

Standard Keyway and Key Dimension		
Bores	Keyway	Key
3/8	3/8 i A ₆	3/8 i A ₆
1/2 - 1 1/4	1/2 i A ₆	1/2 i A ₆
1 1/8 - 1 3/8	3/8 i A ₆	3/8 i A ₆
1 1/8 - 1 3/4	3/8 i A ₆	3/8 i A ₆
1 3/8 - 2 1/4	1/2 i A ₆	1/2 i A ₆
2 1/8 - 2 3/4	3/8 i A ₆	3/8 i A ₆
2 1/8 - 3 1/4	3/8 i A ₆	3/8 i A ₆
3 3/8 - 3 3/4	1/2 i A ₆	1/2 i A ₆
3 3/8 - 4 1/4	1 i A ₆	1 i A ₆
4 3/8 - 5 1/2	1 1/4 i A ₆	1 1/4 i A ₆
5 1/8 - 6 1/2	1 1/2 i A ₆	1 1/2 i A ₆
6 3/8 - 7 3/4	1 3/4 i A ₆	1 3/4 i A ₆
7 3/8 - 9	2 i A ₆	2 i A ₆
9 3/8 - 11	2 1/2 i A ₆	—
11 3/8 - 13	3 i A ₆	—

Shallow Key Dimension-Steel			
Key Seat.	Key	Keyway	Key
1/2 i A ₆	1/2 i A ₆	3/8 i A ₆	3/8 i A ₆
3/4 i A ₆	3/4 i A ₆	1/2 i A ₆	1/2 i A ₆
1 i A ₆	1 i A ₆	3/4 i A ₆	3/4 i A ₆
1 1/4 i A ₆	1 1/4 i A ₆	1 i A ₆	1 i A ₆
1 1/2 i A ₆	1 1/2 i A ₆	1 1/4 i A ₆	1 1/4 i A ₆
1 3/4 i A ₆	1 3/4 i A ₆	1 1/2 i A ₆	1 1/2 i A ₆
2 i A ₆	2 i A ₆	1 3/4 i A ₆	1 3/4 i A ₆
2 1/4 i A ₆	2 1/4 i A ₆	2 i A ₆	2 i A ₆

Bushing	Plain Bores Not Split
SH-STL	1/2
DS-STL	1/2
SK-STL	1/2
SF-STL	1 1/8
E-STL	3/8 - 1 1/8
F-STL	1 - 2 1/8
J-STL	1 1/8 - 2 1/8
M-STL	2 - 2 1/8
N-STL	2 1/8 - 4 1/8

QD bushings made of stainless steel are available as made to order.

Standard "QD" Bushings

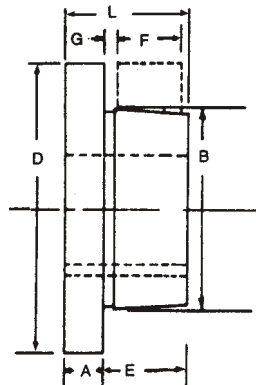
Bushing	Dimensions(Inches)								Cap Screws Required	Stock Bore Range			Set Scev Size	AVERAGE Weight (Approx)
	A	B	D	E	F	G	L	Bolt Circle		Minmum	Maximum			
											Standard Keyway	Shallow Keyway		
H	5/16	1.625	2 1/2	1	7/8	1/8	1 1/4	2	2-1/4 x 3/4	1/2	1 1/4	1 1/2	1/4	.7
JA	3/8	1.375	2	1 1/16	9/16	1/8	1 1/16	1.665	3-10 x 1	3/8	1	1 1/4	10-24	.9
SH	7/16	1.871	2 11/16	7/8	1 3/16	3/16	1 5/16	2 1/4	3-1/4 x 1 3/8	1/2	1 3/8	1 11/16	1/4	1
SDS	1/2	2.187	3 3/16	7/8	3/4	3/16	1 3/8	2 11/16	3-1/4 x 1 3/8	1/2	1 11/16	2	1/4	1
SD	1/2	2.187	3 3/16	1 5/16	1 1/4	3/16	1 3/8	2 11/16	3-1/4 x 1 7/8	1/2	1 11/16	1 5/16	1/4	1.5
SK	9/16	2.812	3 7/8	1 3/8	1 1/4	3/16	1 5/16	3 3/16	3-5/16 x 2	1/2	2 1/8	2 1/2	5/16	2
SF	9/16	3.125	4 5/8	1 1/2	1 1/4	1/4	2 1/16	3 7/8	3-3/8 x 2	1/2	2 5/16	2 3/16	5/16	3
E	3/4	3.834	6	1 7/8	1 5/8	3/16	2 5/8	5	3-1/2 x 2 3/4	7/8	2 7/8	3 1/2	3/8	10
F	1 3/16	4.437	6 5/8	2 13/16	2 1/2	3/8	3 3/8	5 5/8	3-9/16 x 3 5/8	1	3 3/16	3 5/16	1/2	11.5
J	1	5.148	7 3/4	3 1/2	3 3/16	3/8	4 1/2	6 1/4	3-5/8 x 4 1/2	1 1/16	3 3/4	4 1/2	5/8	18
M	1 1/4	6.500	9	5 1/2	5 1/8	3/8	6 3/4	7 7/8	4-3/4 x 6 3/4	1 5/16	4 3/4	5 1/2	3/4	37
N	1 1/2	7.000	10	6 5/8	6 1/4	7/16	8 5/8	8 1/2	4-7/8 x 8 1/2	2 1/16	5 5/8	6	3/4	57
P	1 3/4	8.250	11 3/4	7 5/8	7 1/4	1/2	9 3/8	10	4-1 x 9 1/2	2 15/16	5 15/16	7	7/8	120
W	2	10.437	15	9 3/8	9	1/2	11 3/8	12 3/4	4-1 1/8 x 11 1/2	4	7 1/2	8 1/2	1	250
S	3 1/4	12.125	17 3/4	12 1/2	12	1/2	15 3/4	15	5-1 1/4 x 15 1/2	6	8 1/4	10	1 1/4	400

Inch Bore

Bushing	Bores	Keyway
JA	3/8 - 7/16	NO K.W.
	1/2 - 1	STD
	1 1/16 - 1 1/8	1/4 x 1/16
	1 3/16	1/4 x 1/16
SH	1/2 - 1 3/8	NO K.W.
	1 1/16 - 1 1/2	STD
	1 3/16 - 1 5/8	3/8 x 1/16
	1 11/16	NO K.W.
SDS	1/2 - 1 1/16	STD
	1 3/4	3/8 x 1/8
	1 3/16	1/2 x 1/8
	1 7/8 - 1 5/16	1/2 x 1/16
SD	2	NO K.W.
	1/2 - 1 1/16	STD
	1 3/4	3/8 x 1/8
	1 3/16	1/2 x 1/8
SK	1 7/8	1/2 x 1/16
	2	NO K.W.
	1/2 - 2 1/8	STD
	2 3/16 - 2 1/4	1/2 x 1/8
SF	2 5/16 - 2 1/2	5/8 x 1/16
	2 3/16 - 2 3/4	5/8 x 1/16
	2 13/16 - 2 7/8	3/4 x 1/16
	2 5/8	3/4 x 1/32
E	7/8 - 2 7/8	STD
	2 15/16 - 3 1/4	3/4 x 1/8
	3 3/8 - 3 1/2	7/8 x 1/16
F	1 - 3 3/16	STD
	3 3/8 - 3 3/4	7/8 x 3/16
	3 7/8 - 3 5/16	1 x 1/8
	4	NO K.W.
J	1 1/4 - 3 3/4	STD
	3 3/16 - 4 1/2	1 x 1/8
M	2 - 4 3/4	STD
	4 3/16 - 5 1/2	1 1/4 x 1/4
N	2 7/16 - 5	STD
	5 1/8 - 5 1/2	1 1/4 x 1/4
	5 9/16 - 6	1 1/2 x 1/4
P	2 15/16 - 5 5/16	STD
	6 - 6 1/2	1 1/2 x 1/4
	6 9/16 - 7	1 3/4 x 1/8
W	4 - 7 1/2	STD
	7 9/16 - 8 1/2	2 x 1/4

Millimeter Bore

Bushing	Bore MM	Key* WXT
SH	24.25	8x7
	28.30	
	32.35	10x8
SDS	24.25	
	28.30	8x7
	32.35	10x8
	38	
SD	40.42	12x8
	24.25	8x7
	28.30	10x8
	32.35	10x8
SK	38	
	40.42	12x8
	24.25	8x7
	28.30	10x8
SF	32.35	10x8
	38	
	40.42	12x8
	48.50	14x9
	55	16x10
E	28.30	8x7
	32.35	10x8
	38	
	40.42	12x8
	48.50	14x9
F	55	16x10
	28.30	8x7
	32.35	10x8
	38	
	40.42	12x8
J	48.50	14x9
	55	16x10
	60.65	18x11
	70.75	20x12
	80.85	22x14
J	90	25x14
	50	14x9
	55	16x10
	60.65	18x11
	70.75	20x12
J	80.85	22x14
	90.95	25x14
	100	28x16



* Important — The metric system does not refer to keyseat or keyway dimensions as does the English system; instead dimensions are given for the key itself which is rectangular in shape, not square as in the English system.

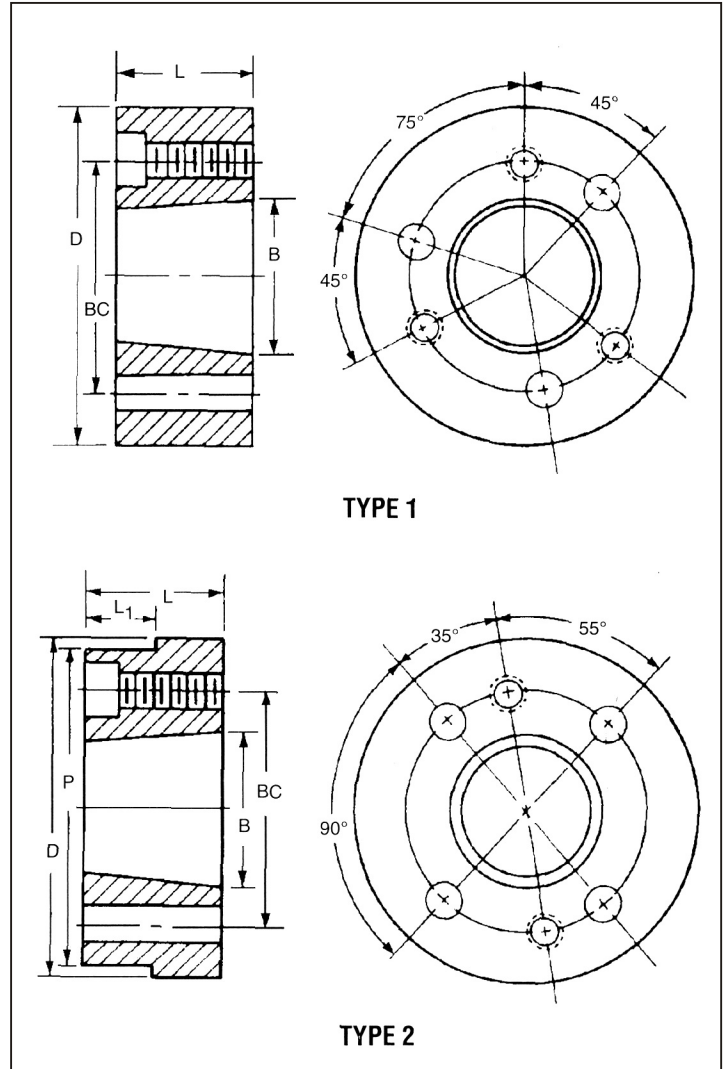
NOTE: .03937"=1mm TO ORDER:
Ex-24mm=0.94488"

Keystock provided for nonstandard keyways

“QD” Weld-On Hubs



QD weld-on hubs are suitable for use in many applications, such as welding to plate steel sprockets
Weld-on hubs are made of steel, drill tapped and taper bored for QD bushings



QD Type 1 and Type 2 Weld-On Hubs

Catalog Number	Dimensions-Inches						Type Drilling	Weight Pounds	Mounting
	D★	L	B	P	L1	BC			
JA-A	2.250	3/16	1.375	-	-	1 1/2	1	.4	STD or Reverse Mount ↓
SH-A	3.000	1/8	1.871	-	-	2 1/4	1	1	
SDS-A	3.500	3/4	2.188	-	-	2 1/8	1	1 1/4	
SK-A	4.375	1 1/2	2.813	-	-	3 5/16	1	3	
SF-A	5.000	1 1/4	3.125	-	-	3 3/8	1	4	
E-A	6.250	1 3/8	3.832	-	-	5	1	9	
F-A	7.000	2 1/8	4.437	-	-	5 5/8	1	16	STD Mount Only
J-A	7.750	3 3/16	5.140	-	-	6 1/2	1	22.5	
M-A	9.500	5 5/16	6.494	9.250	3 3/16	7 7/8	2	50	
N-A	10.500	6 1/8	6.990	10.250	4 1/2	8 1/2	2	75	STD Mount Only
P-A	13.000	7 1/4	8.240	-	-	10	2	155	
W-A	15.500	9	10.437	-	-	12 3/4	2	300	
S-A	19.500	12	12.125	18.75	7.5	15	2	558	

★ Tolerance of D Dimension.
JA-A Thru J-A=(+.000-.002)
M-A Thru S-A=(+.000-.003)